



SECURE COMMUNICATIONS SYSTEM

INSTALLING EXTRA PROFILES ON WINDOWS' COMPUTERS



LAST RESORT SUPPORT PTY. LTD.

2 Hunter Court, Melbourne, Victoria, Australia, 3977

Tel: 61 3 9012 7394, Fax: 61 3 5995 8819

Email: support@lrsupport.com.au

ABN 85 092 037 628

WWW.LRSUPPORT.COM.AU



TABLE OF CONTENTS

1. INSTALLING EXTRA ALLTALK PROFILES (WINDOWS)	1
Installing the Server Certificate	1.1
Downloading Your Key and Software	1.5
Creating the AllTalk Profile	1.7
Putting AllTalk back into Schedule Mode	1.10

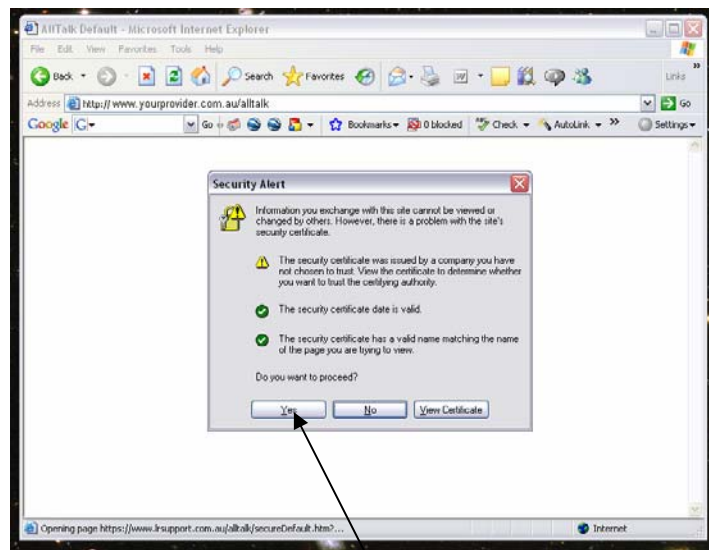
INSTALLING EXTRA PROFILES ON A WINDOWS COMPUTER

STEP ONE INSTALLING THE SERVER CERTIFICATE

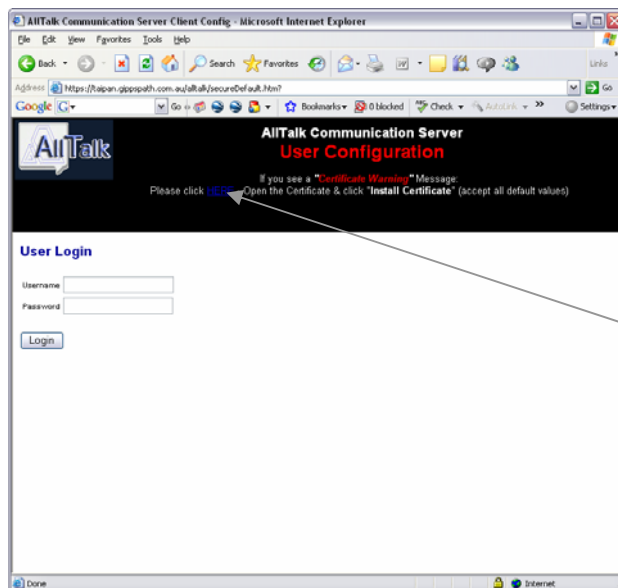
Visit the AllTalk website of your Service Provider (e.g. www.lrsupport.com.au/AllTalk)

Note:

You may see a certificate warning. If you do, use the following steps to prevent this warning from appearing again. If no warning appears, skip to STEP TWO.



If you see a certificate warning, click **Yes**



In the Top section, Click where Indicated ("Here") to open the AllTalk Server Certificate.



Click "Open"



Click "Install Certificate" to display the "Certificate Import Wizard"

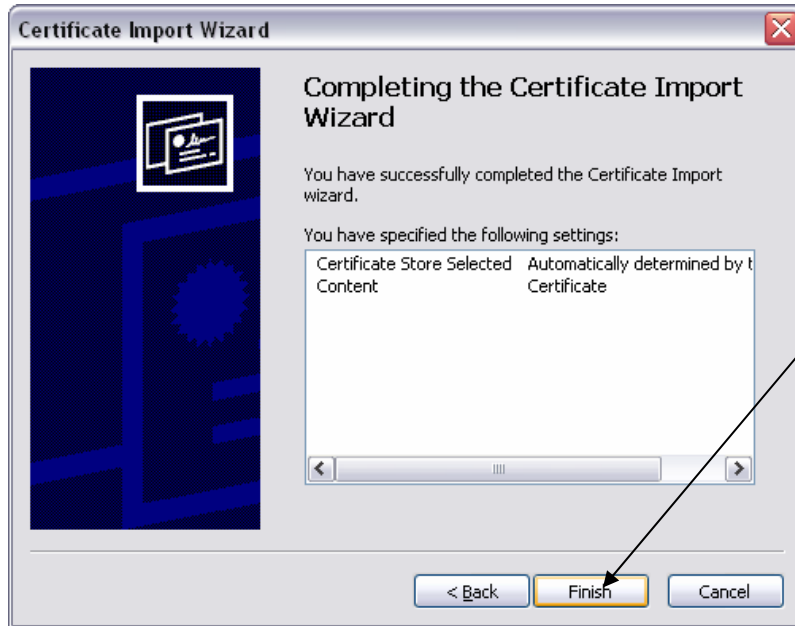




Click on **"Next"** to start the Wizard



Leave this screen as is – click **"Next"** to continue



Click **"Finish"**
(You may see the following Certificate Warning)



If the warning is displayed, just click **"Yes"**

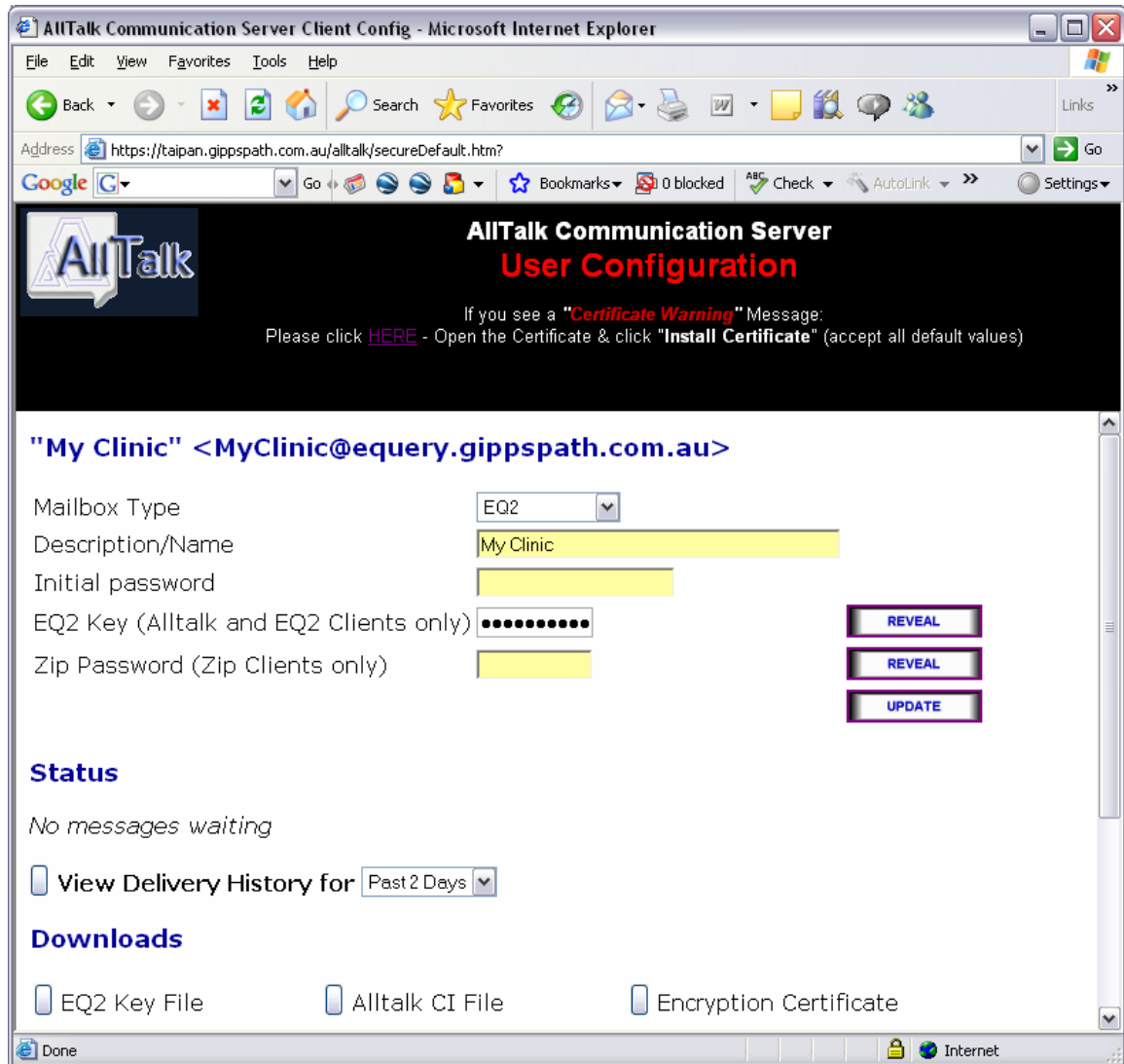
Your Certificate is now successfully imported.
Click **"OK"** to continue



STEP TWO DOWNLOADING YOUR KEY AND SOFTWARE

Back to the Web Page,

Downloading your key and Software.



AllTalk Communication Server
User Configuration

If you see a **"Certificate Warning"** Message:
Please click [HERE](#) - Open the Certificate & click **"Install Certificate"** (accept all default values)

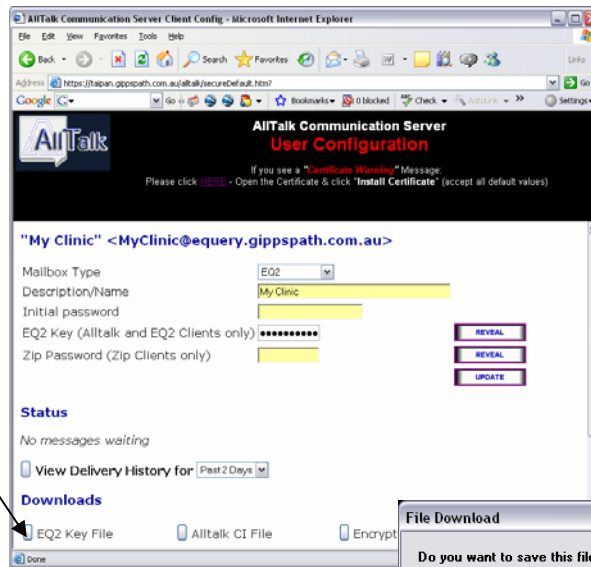
"My Clinic" <MyClinic@equery.gippspath.com.au>

Mailbox Type: EQ2
Description/Name: My Clinic
Initial password: [REDACTED]
EQ2 Key (Alltalk and EQ2 Clients only): [REDACTED] **REVEAL**
Zip Password (Zip Clients only): [REDACTED] **REVEAL**
UPDATE

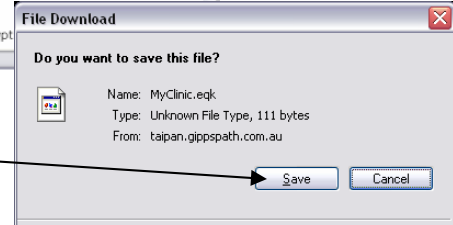
Status
No messages waiting
 View Delivery History for Past 2 Days

Downloads
 EQ2 Key File Alltalk CI File Encryption Certificate

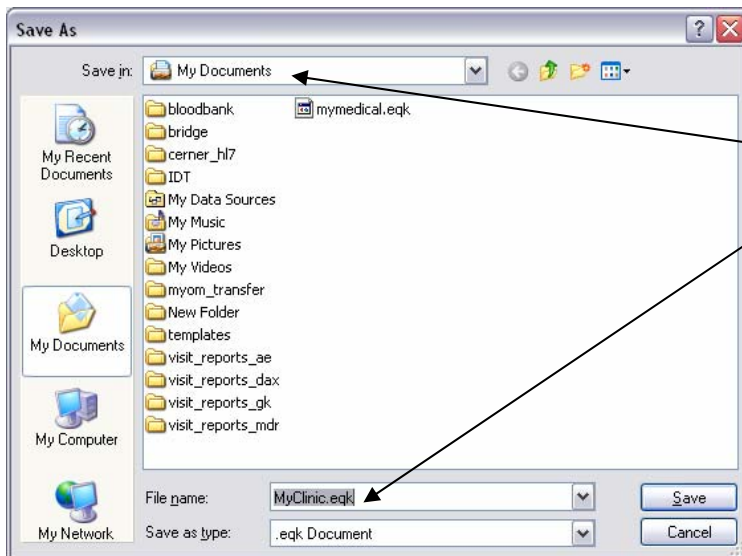
Type your username and password as given to you by your service provider to logon to your AllTalk Account.



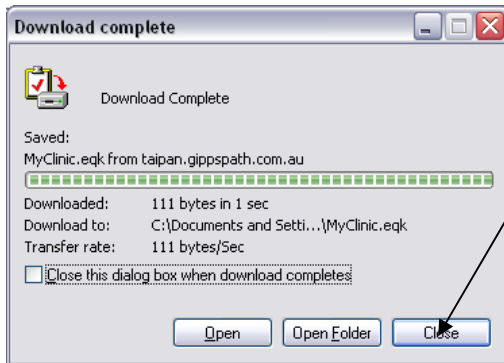
Click on "EQ2 Key File"



Click "Save"

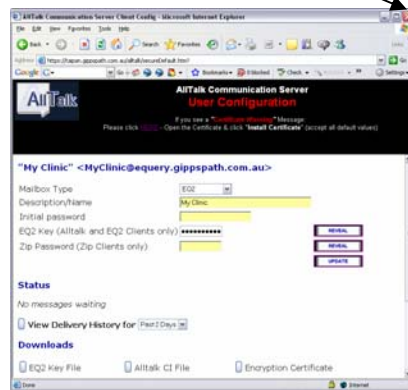


Save into "My Documents"

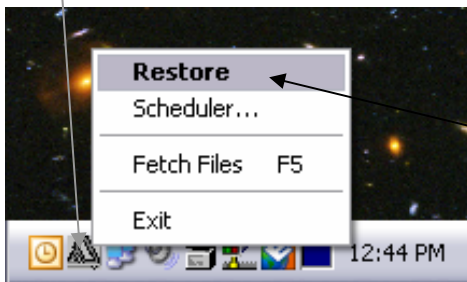


When the file has been saved click "**Close**"

Click on "**X**" to close the Web Page



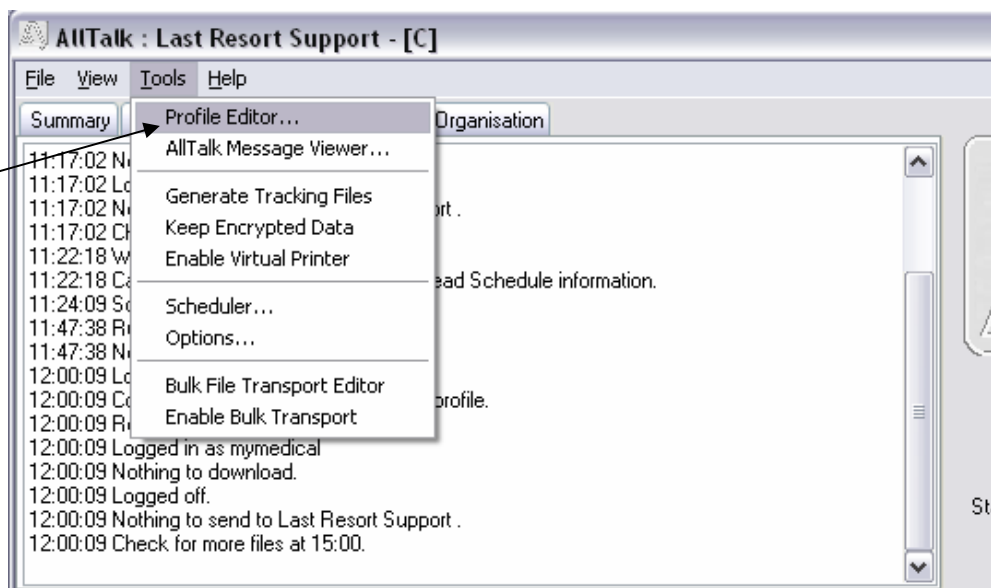
Click on the AllTalk icon on the system tray (near the clock)



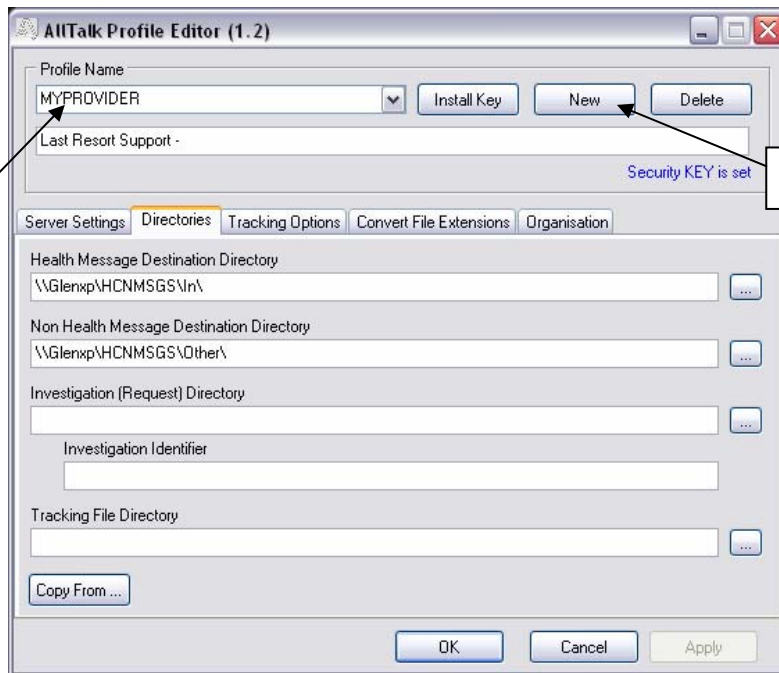
Click on "**Restore**" and the AllTalk Screen will appear

STEP THREE CREATING THE ALLTALK PROFILE

Click on "**Tools**" and then select "**Profile Editor**"

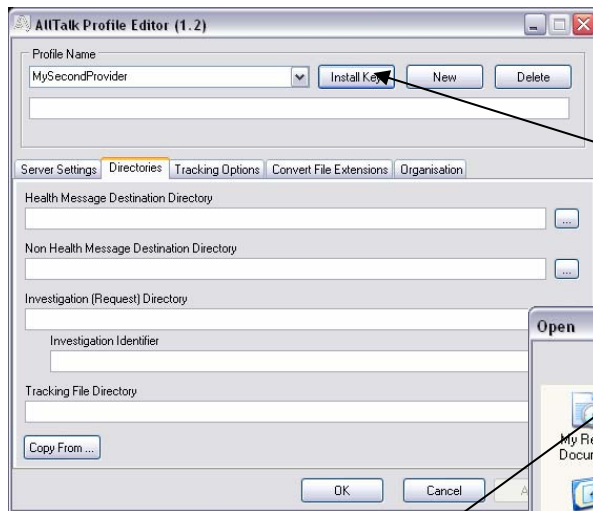


The AllTalk Profile Editor will start:



Type a **"Profile Name"** which reflects your Provider's Server Name (no spaces)

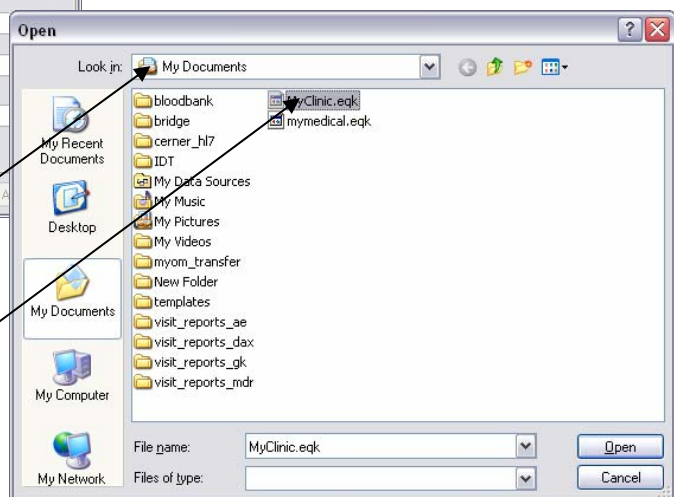
Click **"New"**



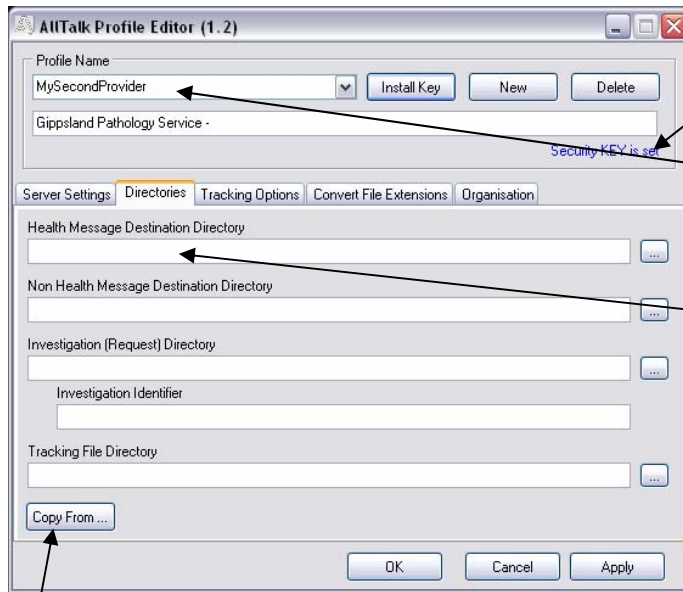
Click on **"Install Key"**

Browse to **"My Documents"**

Double click your Key File downloaded in Step 1.



Be especially careful that the key you select is the NEW one you just downloaded, not one from a provider you installed earlier.



The Security Key should now be "set"

The providers name will be visible.

Next, set the "Health Message Destination Directory" to the location where your Practice software expects to find results.

In most cases, this should be the same as your other profiles.

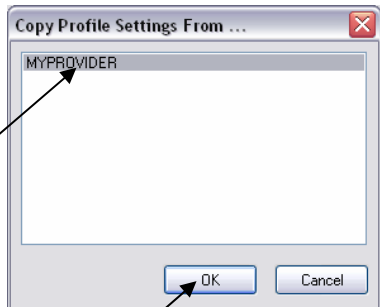
You may configure the directories manually (see "Chapter 1: Installing AllTalk for Windows" for details)

Warning
For Medical Spectrum/Plexus and MT32
please contact your Practice Software support team for help.

To copy the directory settings from one of your other profiles, click "Copy From"

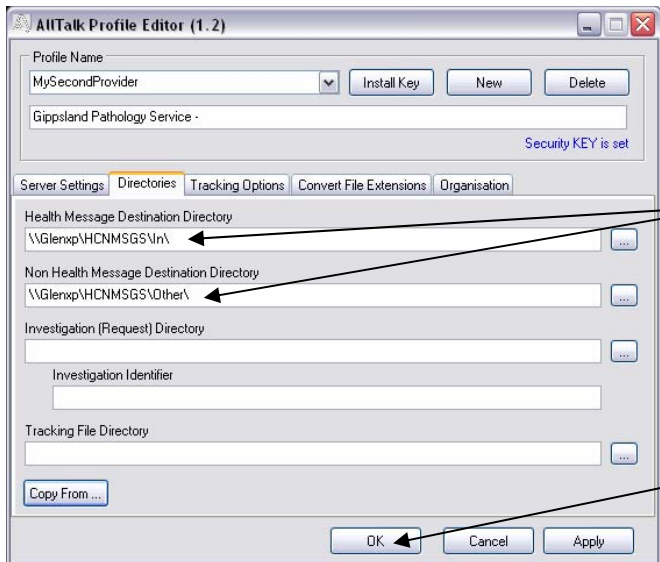
Select a profile from the list

Note: If you have more than one profile in this list, you may wish to check the settings for each profile before proceeding.



Click "OK"

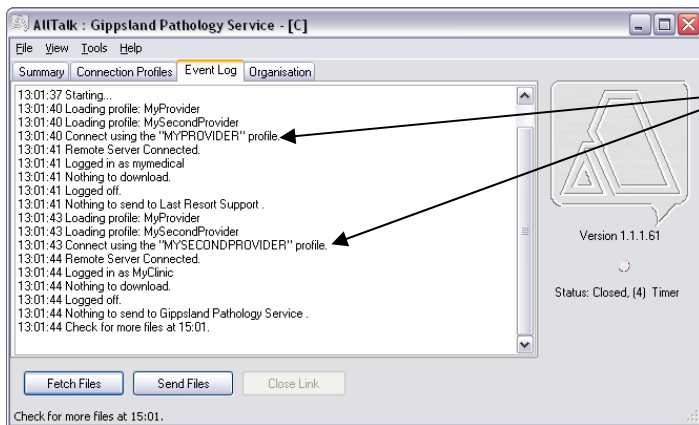
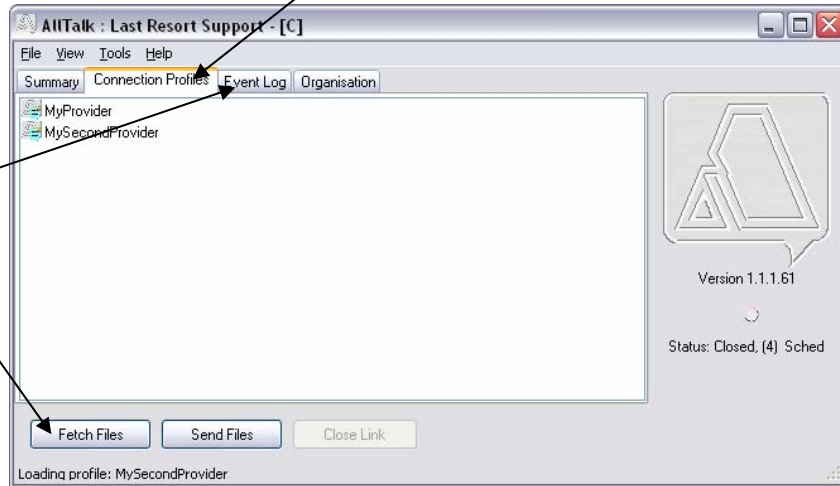
Your folder settings will be copied from the other profile.



Click "OK"

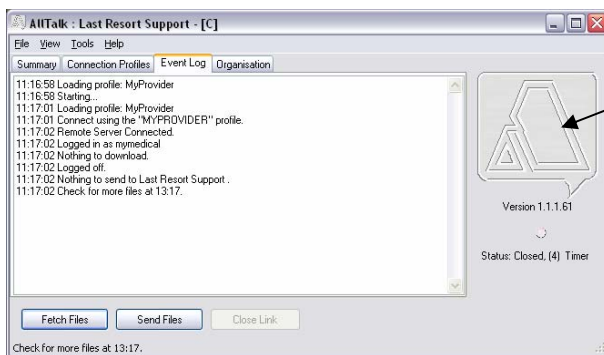
AllTalk will now show your second profile in the Connection Profiles tab:

Click on the "Event Log" tab
Then click "Fetch Files"



You will see that AllTalk connects to both Providers

STEP FOUR PUTTING ALLTALK BACK INTO SCHEDULE MODE



Click on the large "AllTalk Logo" on the top right of the program window



AllTalk will minimise to the system tray (near the clock)